

2 WAVEGUIDE DETAIL
C-1 SCALE: 3/8" = 1'-0"

CONSTRUCTION NOTES

1. NEW COMMUNICATIONS ANTENNAS (TOTAL OF 9).
2. NEW GPS ANTENNAS (2 THUS).
3. RADIO TELEPHONE EQUIPMENT PROVIDED AND INSTALLED BY OTHERS ARE SHOWN FOR COORDINATION PURPOSES ONLY.

GENERAL NOTES

1. CONTRACTOR SHALL COMPLY WITH ALL APPLICABLE BUILDING CODE STANDARDS OF THE AUTHORITIES HAVING JURISDICTION OVER THE PROJECT AND MEET INDUSTRY STANDARDS FOR GOOD WORKMANSHIP.
2. NOTIFY THE PROPERTY OWNER, NEXTEL PROJECT MANAGER AND THE ARCHITECT/ENGINEER OF RECORD WELL IN ADVANCE AS TO WHEN CONSTRUCTION WILL COMMENCE.
3. COORDINATE THE LOCATION OF THE CONSTRUCTION STAGING AREA WITH THE PROPERTY OWNER, BUILDING MANAGER AND THE ARCHITECT/ENGINEER OF RECORD WELL IN ADVANCE OF THE CONSTRUCTION START DATE.
4. PROTECT THE EXISTING FACILITIES AT ALL TIMES; THE CONTRACTOR IS RESPONSIBLE FOR REPAIRING ANY DAMAGE CAUSED BY CONSTRUCTION OPERATIONS.
5. CONTRACTOR SHALL VERIFY THE EXACT LOCATION OF ALL EXISTING UTILITIES BY CALLING 1-800-432-4110 SUNSHINE STATE PRIOR TO COMMENCING WITH THE WORK.
6. CONTRACTOR SHALL FIELD VERIFY ALL EXISTING CONDITIONS AND PLAN DIMENSIONS AND NOTIFY THE ARCHITECT/ENGINEER OF RECORD OF ANY DISCREPANCIES.
7. THE CONTRACTOR SHALL REMOVE ALL TRASH AND DEBRIS FROM THE SITE ON A DAILY BASIS.
8. THE EQUIPMENT LOCATIONS SHOWN SHALL NOT VARY WITHOUT THE REVIEW/APPROVAL OF THE ARCHITECT/ENGINEER OF RECORD.

NOTES

THIS IS AN UNMANNED RESTRICTED GROUND SITE AND WILL BE USED FOR THE TRANSMISSION OF RADIO SIGNALS FOR THE PURPOSE OF PROVIDING PUBLIC CELLULAR SERVICE.

NEXTEL COMMUNICATIONS CERTIFIES THAT THIS FACILITY WILL BE SERVICED ONLY BY NEXTEL EMPLOYEES AND THE WORK ASSOCIATED WITH ANY EQUIPMENT CANNOT BE PERFORMED BY HANDICAPPED PERSONS. THIS FACILITY WILL BE FREQUENTED ONLY BY SERVICE PERSONNEL FOR REPAIR PURPOSES. PURSUANT TO CHAPTER 553, PART B.A OF THE FLORIDA STATUTES, THIS FACILITY IS EXEMPT FROM THE REQUIREMENTS OF THAT STATUTE. PURSUANT TO THE AMERICANS WITH DISABILITIES ACT (ADA), APPENDIX B, SECTION 411.5 (B), THIS FACILITY IS EXEMPT FROM THAT ACT.

THIS FACILITY WILL CONSUME NO UNRECOVERABLE ENERGY AND IS EXEMPT FROM THE FLORIDA ENERGY REVIEW CODE.

NO POTABLE WATER SUPPLY IS TO BE PROVIDED AT THIS LOCATION.


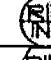
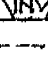
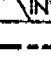
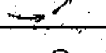
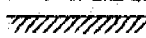

NO WASTE WATER WILL BE GENERATED AT THIS LOCATION.

NO SOLID WASTE WILL BE GENERATED AT THIS LOCATION.

NO PARKING FACILITIES WILL BE PROVIDED WITHIN THE LEASE SITE.

NEXTEL COMMUNICATIONS MAINTENANCE CREW (TYPICALLY ONE PERSON) WILL MAKE AN AVERAGE OF ONE TRIP PER MONTH AT ONE HOUR PER TRIP.

LEGEND

EXISTING		NEW	
→ →	SANITARY SEWER	→ →	
→ →	STORM SEWER	→ →	
— — — — —	WATER MAIN	— — — — —	
	SANITARY MANHOLE ELEVATIONS		
	STORM STRUCTURE ELEVATIONS		
— — — — —	PROPERTY LINE	— — — — —	
	1" SLOPE		
	SURFACE DRAINAGE		
○	LIGHT STANDARD	●	
○ — ○	STREET LIGHT	● — ●	
672.15	SPOT ELEVATION	672.15	
672	CONTOUR	672	
— G — G —	GA8 MAIN	— G — G —	
⊙	MANHOLE	⊙	
○	CATCH BASIN	●	
□	VALVE IN BOX	■	
⊗	INLET	⊗	
⊕	FIRE HYDRANT	⊕	
— — — — —	EASEMENT LINE	— — — — —	
— X — X — X —	FENCE	— X — X — X —	
— UE/UT —	BURIED UTILITY LINE	— UE/UT —	
Ø	UTILITY POLE	●	
— OE/OT —	OVERHEAD UTILITY LINE	— OE/OT —	
	BUILDING		

NEXTEL
COMMUNICATIONS

6700 N. ANDREWS AVENUE
SUITE 700
FT. LAUDERDALE, FLORIDA 33309
PHONE: (954) 275-2400
FAX : (954) 275-2416



PAL
TELECOM
GROUP

PROJECT MANAGEMENT
ARCHITECTURE
ENGINEERING
CONSTRUCTION

PAL TELECOM GROUP, INC.
CHICAGO • CLEVELAND • FT. LAUDERDALE • ORLANDO • SAO PAULO, BRAZIL

1 E. BROWARD BLVD. 8619 W. BRYN MAWR
SUITE 800 CHICAGO, IL 60631
FT. LAUDERDALE, FL. 33301 Tel: (773) 693-5200
TEL (954) 453-2729 Fax: (773) 693-3241
FAX: (954) 453-2734

THIS DRAWING IS COPYRIGHTED AND IS THE SOLE PROPERTY OF PAL TELECOM GROUP, INC. IT IS PRODUCED FOR USE BY NEXTEL COMMUNICATIONS. REPRODUCTION OR OTHER USE OF THIS DRAWING OR THE INFORMATION CONTAINED HEREIN WITHOUT THE WRITTEN PERMISSION OF PAL TELECOM GROUP, INC. IS PROHIBITED. ALL RIGHTS RESERVED. ©1998

PAL PROJECT NUMBER : 98321

DRAWN BY : MBH

APPROVED BY : H.S.

[illegible]

APPROVALS

PROJECT MANAGER _____ DATE: _____

NEXTEL _____ DATE: _____

PROPERTY OWNER _____ DATE: _____

SITE FL-1612 AA
TRADEWINDS PARK

3311 NW 27th Avenue
2900 WEST SAMPLE ROAD
POMPANO BEACH
BROWARD COUNTY
FLORIDA 33073

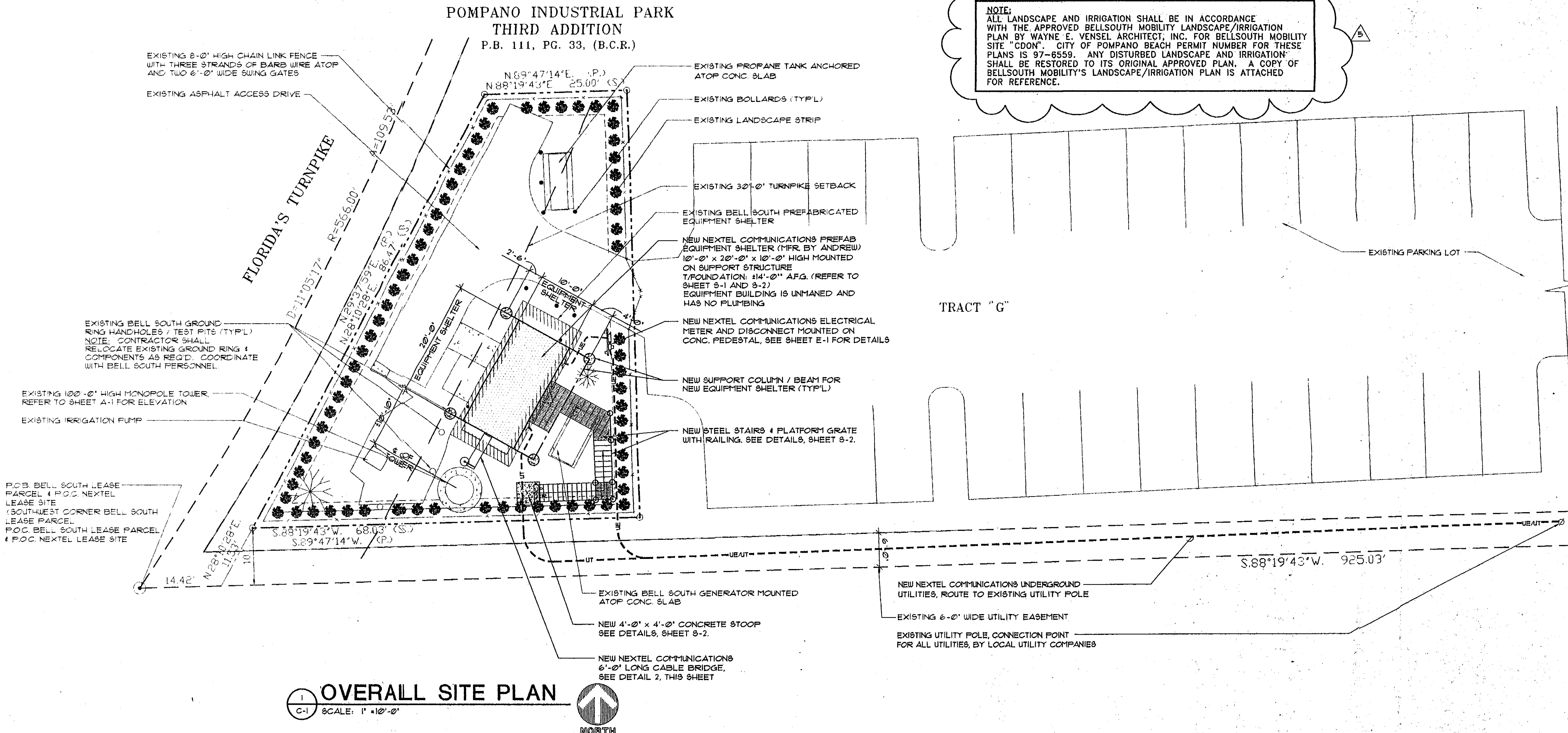
FOLIO NO. 8221-07-007

SHEET TITLE

OVERALL SITE PLAN,
GENERAL NOTES AND
DETAILS

SHEET NUMBER

C-1



NOTE:
ALL LANDSCAPE AND IRRIGATION SHALL BE IN ACCORDANCE
WITH THE APPROVED BELLSOUTH MOBILITY LANDSCAPE/IRRIGATION
PLAN BY WAYNE E. VENSEL ARCHITECT, INC. FOR BELLSOUTH MOBILITY
STATION, 1000 W. OF SPANO BEACH, TRACT NUMBER 1. THESE
PLANS IS 97-8559. ANY DISTURBED LANDSCAPE AND IRRIGATION
SHALL BE RESTORED TO ITS ORIGINAL APPROVED PLAN. A COPY OF
BELLSOUTH MOBILITY'S LANDSCAPE/IRRIGATION PLAN IS ATTACHED
FOR REFERENCE.

- NOTE:
1. CONTRACTOR IS RESPONSIBLE FOR RETURNING SITE TO ITS ORIGINAL CONDITION DUE TO NEW CONSTRUCTION.
 2. CONTRACTOR TO VERIFY LOCATION OF ANY EXISTING UNDERGROUND UTILITIES, GROUNDING, ETC. AND NOTIFY ARCHITECT OF ANY CONFLICTS WITH NEW CONSTRUCTION.